

CURRICULUM VITAE

Chi-Chang Chang Prof. PhD 張啟昌教授

School of Medical Informatics

Director. [Medical Decision Science Laboratory](#)

Consultant. Cancer Center of CSMU Hospital

Consultant. Biomedical Industry Research Center

Consultant. Information Technology office of CSMU Hospital

Consultant. Smart Healthcare Committee of CSMU Hospital

Email changintw@gmail.com



EDUCATION

Ph.D. Industrial Engineering and Management, Yuan Ze University, Taiwan, Aug 2001- Sep 2006.

M.S. Information Management, Ming Chuan University, Taiwan, Aug 1998- Jan 2001.

B.S. Information Management, Yuan Ze University, Taiwan, Aug 1994- Jul 1998.

EXPERIENCE

Professor, School of Medical Informatics CSMU 2020.8-

Chairman, School of Medical Informatics CSMU 2018.8- 2020.7

Assoc. Prof, School of Medical Informatics CSMU 2014.8- 2020.7

Assist. Prof, Dep. Information Management CSMU 2006.9- 2014.7

Research Consulting, Cancer Center, CSMU of Hospital 2016.8-

Consulting, Information Technology office of CSMU Hospital 2010.8-

Consulting, Biomedical Industry Research Center of CSMU Hospital 2010.8-

RESEARCH CONTRIBUTIONS

Machine Learning in Prediction of Second Primary Cancers and Recurrent cancers/ Bioinformatics

Predict Glaucoma development before disease onset/ Digital Traditional Chinese Medicine (TCM)

Risk Prediction for Early Chronic Kidney Disease (CKD)/ Posttraumatic Growth (PTG)

Shared Medical Decision Making (SMDM-TRUST-REGRET-CONFLICT)/ Quality of Life (QoL)

Clinical Operational Research/ Healthcare Service Innovation and Management (HSM)

JOURNAL GUEST EDITORS

International Journal of Environmental Research and Public Health (IF 2.849)

International Journal of Medical Sciences (IF 2.523) • Therapeutics & Clinical Risk Management (IF 1.888)

Frontiers in Genetics (IF 3.260) • Journal of Universal Computer Science (IF 0.910)

Open Medicine (IF 1.221) • International Journal of Computers and Applications (EI/ Scopus)

Journal of Quality (EI/Scopus) • Journal of Computing Science and Engineering (EI/ Scopus)

Intl Journal of Business and Systems Research (EI/ Scopus) • ACM (EI/ Scopus)

Intl Journal of Management, Economics and Social Sciences (EI/ Scopus)

Journal of Electronic Science and Technology (INSPECT/ Scopus)

JOURNAL EDITORIAL BOARD

Annual of Proteomics and Bioinformatics, Journal of Obstetrics & Gynecology Research, Int'l Journal of Gynecology & Obstetrics, Infertility and Reproductive Endocrinology, American Journal of Biometrics & Biostatistics, Chronicles of Oncology, Int'l Journal of Bus. and Sys. Research, Journal of Oncology Research Forecast, Bioequivalence & Bioavailability, Clinics in Medicine, Obstetrics & Gynecology

FOUNDING INT'L CONFERENCES • JOINT EXECUTIVE BOARD • AI FORUM

[International conference on Medical and Health Informatics \(ICMHI\)](#) was founded in 2017

[International conference on Healthcare Service Management \(ICHSM\)](#) was founded in 2018

[The Joint Executive Board on Medical Informatics in Taiwan \(JEBMI\)](#) was founded in 2018

[Health Big Data, Analytics and Artificial Intelligence Forum \(HBAAI\)](#) was founded in 2017

JOURNAL PAPERS

- Chan, C.-L., [Chi-Chang Chang*](#) Big Data, Decision Models, and Public Health. *International Journal of Environmental Research and Public Health* 2020, 17(18), 6723. (SCI; SSCI)
- Ching-Hsuan Chien, [Chi-Chang Chang](#), Shih-Huan Lin, Chi-Wei Chen, Zong-Han Chang and Yen-Wei Chu* (2020, Sep). N-GlycoGo: Predicting Protein N-glycosylation Sites on Imbalanced Data Sets by Using Heterogeneous and Comprehensive Strategy, *IEEE Access*, vol. 8, 165944-165950, 2020 (SCI)
- [Chi-Chang Chang](#), Chi-Jie Lu, Chih-Te Yang* (2020, Sep). Multistage Supply Chain Production–Inventory Model with Collaborative Preservation Technology Investment, *Scientia Iranica*, Accepted. (SCI).
- [Chi-Chang Chang*](#), Chi-Jie Lu (2020, August). Preface for the Special Issue on Measuring Quality Improvement in Healthcare, *Journal of Quality*, 27(4). (EI).
- Chuen Chin, W-C Ting, [Chi-Chang Chang*](#), Yi-Xiang Zhang (2020, August). Prediction of risk factors for Synchronous Colorectal Cancer in Patients with Colorectal Cancer, *Journal of Quality*, 27(4). (EI).
- Sun-Long Cheng, [Chi-Chang Chang*](#) (2020, August). Effect on the Quality of Life in Patients with Oral Cancer after Orthopedic Surgery: A Longitudinal Study, *Journal of Quality*, Vol. 27, No. 4. (EI).
- Chin-Chuan Shih, Chi-Jie Lu, Gin-Den Chen, [Chi-Chang Chang*](#) (2020, July). Risk Prediction for Early Chronic Kidney Disease: Results from an Adult Health Examination Program of 19,270 Individuals, *International Journal of Environmental Research and Public Health*, 2020, 17(14), 4973. (SCI; SSCI)
- K-P Chang, John Wang, [Chi-Chang Chang*](#), Y-W Chu (2020, May). Development of a Novel Tool for the Retrieval and Analysis of Hormone Receptor Expression Characteristics in Metastatic Breast Cancer via Data Mining on Pathology Reports. *BioMed Research International*, Vol. 2020, Article ID 2654815. (SCI)
- Zi-Wei Wang, [Chi-Chang Chang*](#), Quan Zou. (2020, April) COVID-19 Related Research by Data Mining in Single Cell Transcriptome Profiles. *Journal of Electronic Science and Technology*, Vol. 18, 1-5, 2020. (INSPECT/ Scopus)
- Jehn-Hwa Kuo, [Chi-Chang Chang*](#), Chi-Wei Chen, Heng-Hao Liang, Chih-Yen Chang, Yen-Wei Chu* (2020, April). Sequence-Based Structural B-cell Epitope Prediction by Using Two Layer SVM Model and Association Rule Features. *Current Bioinformatics*, 15(3), 246-252. (SCI)
- Wen-Chien Ting, Horng-Rong Chang, [Chi-Chang Chang*](#) and Chi-Jie Lu (2020, Feb) Developing a Novel Machine Learning-Based Classification Scheme for Predicting SPCs in Colorectal Cancer Survivors, *Applied Sciences*, 2020, 10(4), 1355. (SCI)
- [Chi-Chang Chang*](#) and Ssu-Han Chen (2019, Sep). Developing a Novel Machine Learning-based Classification Scheme for Predicting SPCs in Women with Breast Cancer, *Frontiers in Genetics*, 2019, 10:848. (SCI)
- Jone-Han Liu, [Chi-Chang Chang*](#), Chi-Wei Chen, Li-Ting Wong, Yen-Wei Chu* (2019, June). Conservation region finding for influenza a viruse by machine learning methods of N-linked glycosylation sites and B-cell epitopes, *Mathematical Biosciences*, Vol. 315, 2019, 108217 (SCI).
- L Xu, C-R Liao, G-D Chen and [Chi-Chang Chang*](#) (2019, Jan). k-skip-n-gram-RF: A Random Forest based Method for Alzheimer’s Disease Protein Identification, *Frontiers in Genetics*, 2019(10), 33. (SCI)
- Y-T Chen, [Chi-Chang Chang*](#), C-W Chen, K-C Chen, Yen-Wei Chu (2019, Jan). MADS-Box Gene Classification in Angiosperms by Clustering and Machine Learning Approaches. *Frontiers in Genetics*, 2019(9), Article 707. (SCI)
- Lei Xu, Guangmin Liang, Changrui Liao, Gin-Den Chen and [Chi-Chang Chang*](#) (2018, Nov) An Efficient Classifier for Alzheimer’s Disease Genes Identification, *Molecules* 2018, 23(12), 3140. (SCI)
- [Chi-Chang Chang](#), Chi-Hua Tung, Chi-Wei Chen, Chin-HauTu, Yen-WeiChu* (2018, Oct) SUMOgo: Prediction of sumoylation sites on lysines by motif screening models and the effects of various post-translational modifications, *Scientific Reports*, S8:15512. (SCI)
- [Chi-Chang Chang](#), Chi-Jie Lu, Chalong Cheewakriangkrai, Su-Hsin Chang (2018, June) Preface for the Special Issue on Computational Intelligence Technologies Meet Medical Informatics -From Prediction to Prognosis, *Journal of Universal Computer Science*, 24(6), 662-664. (SCI)
- C-W Chen, [Chi-Chang Chang](#), H-C Hung, S-Y Ho, H-P Chang and Y-W Chu* (2018, June). Constructing Feature Models for Citrullination Sites Prediction. *Journal of Quality*, 25(3), 185-195. (EI).

- C-S Cheng, P-W Shueng, Chi-Chang Chang*, C-W Kuo (2018, June) Adapting an Evidence-based Diagnostic Model for Predicting Recurrence Risk Factors of Oral Cancer, *Journal of Universal Computer Science*, 24(6), 742-752. (SCI)
- Chi-Chang Chang and Chi-Jie Lu (2018, June). Preface for the Special Issue on Computational Intelligence Technologies Meets Medical informatics. *Journal of Quality*, Vol. 25, No. 3, 141-142. (EI).
- W-C Ting, Y-C Lu, C-J Lu, C. Cheewakriangkrai, Chi-Chang Chang* (2018, June). Recurrence Impact of Primary Site and Pathologic Stage in Patients Diagnosed with Colorectal Cancer. *Journal of Quality*, 25(3), 166-184. (EI).
- C-C Huang, Chi-Chang Chang, C-W Chen, S-Y Ho, H-P Chang, Y-W Chu* (2018, Feb). PClass: Protein Quaternary Structure Classification by Using Bootstrapping Strategy as Model Selection, *Genes*, Vol. 9, No. 2, pii: E91. (SCI)
- Huan-Cheng Chang, Pin-Hsiang Chang, Sung-Chin Tseng, Chi-Chang Chang* (2018, Feb). A comparative analysis of data mining techniques for prediction of postprandial blood glucose: A Cohort Study. *International Journal of Management, Economics and Social Sciences*, Vol. 7(S1), 132-141. (EI)
- Sunanda Das, Chi-Chang Chang, A. Kumar Das*, A. Ghosh (2017, Dec). Feature Selection based on Bi-objective Differential Evolution. *Journal of Computing Science and Engineering*, 11(4), 130-141. (EI).
- Chih-Jen Tseng, Chi-Chang Chang*, Chi-Jie Lu (2017, June). Integration of ensemble learning and data mining techniques to predict risk factors for recurrent ovarian cancer. *Artificial Intelligence in Medicine*, 78, 47-54. (SCI)
- Chi-Chang Chang, C-J Lu, C Cheewakriangkrai (2017, Dec). Preface for the Special Issue on Computational Intelligence Technologies Meets Medical informatics. *Journal of Computing Science and Eng.*, 11(4), 109-110. (EI).
- Chih-Cheng Sun, Chi-Chang Chang* (2017, Nov) Multiple primary malignant neoplasms: Results from a 5-Year Retrospective Analysis in a Metropolitan Hospital, *Formosan Journal of Surgery*, 50(6), 209-214.
- Yu-Ju Lin, Chiu- Hsiang Lee, Chi-Chang Chang* (2016). Evaluation of a Video-Based Intervention to Promote Condom Use Among College Students in Taiwan. *Studies in health technology and informatics*, 101-104. (MEDLINE/PubMed)
- Fang-Ching Liu and Chi-Chang Chang* (2016). Model-Based Individualized Treatment of Chronic Granulomatous Disease. *Studies in health technology and informatics*, 71-74. (MEDLINE/PubMed)
- H.H. Liao, S.L. Cheng, Chi-Chang Chang*, C.H. Lin, F.C. Liu, C.S. Cheng, (2016) Decisional Trust and Regret Mediate the HRQL in Work-related Hand Injury Patients, *European Psychiatry*, 33, s595-596. (SCI)
- Chi-Chang Chang* (2015) Shared Decision Making and Regret Plays Critical Roles of Posttraumatic Growth: a Longitudinal Study, *Medical Decision Making*, 36(5), E78-E415 (SCI)
- Chih-Kuang Chang, Chi-Chang Chang* (2014) Bayesian Imperfect Information Analysis for Clinical Recurrent Data, *Therapeutics and Clinical Risk Management*, 2015:11, 17-26. (SCI)
- Chi-Chang Chang* (2014) Developing the First Validity of Shared Medical Decision- Making Questionnaire in Taiwan, *Global Journal of Medical Research*, 14(2), 9-15.
- C-J Tseng, C-J Lu, Chi-Chang Chang*, G-D Chen (2013) Application of Machine Learning to Predict the Recurrence-Proneness for Cervical Cancer, *Neural Computing and Applications*, 24(6), 1311-1316. (SCI)
- Chi-Chang Chang* (2013) The effect on life quality of oral cancer patients after the orthopedic surgery, *European Psychiatry*, Volume 28, Supplement 1, 2013. (SCI)
- Chi-Chang Chang* (2011) Developing the first validation of the shared decision-making questionnaire in Taiwan, *Medical Decision Making*, 31(E54), E124-E125. (SCI)
- Chi-Chang Chang*, Cheng, C-S. (2007) A Structural Design of Clinical Decision Support System for Chronic Diseases Risk Management, *Central European Journal of Medicine*, 2(2), 129-139. (SCI)
- Chi-Chang Chang*, Cheng, C.-S., and Huang, Y.-S. (2006) A Web-Based Decision Support Systems for Chronic Diseases, *Journal of Universal Computer Science*, 12(1), 115-125. (SCI)
- Chi-Chang Chang*, Cheng, C.-S. (2006) A Bayesian Decision Process with Fuzzy Interpretability for Aging Chronic Disease, *International Journal of Technology Management*, 40, 1/2/3, 176-191. (SSCI)
- Huang, Y.-S., Chi-Chang Chang* (2004) A Study of Defuzzification with Experts' Knowledge for Deteriorating Repairable Systems, *European Journal of Operational Research*, 157(3), 658-670. (SCI)

CHAPTERS IN BOOKS

- [Chi-Chang Chang*](#), Chen, Y-F. (2007) Designing A CRM-based E-Government Usability Evaluation Framework: Integrating Internal and External Customers in Public Services, *Social Implications and Challenges of E-Business*, ISBN: 159-904-105-7, Idea Group, 2007.
- [Chi-Chang Chang*](#), Chen, RS. Sun, PR. (2010) Applying Fuzzy Bayesian Maximum Entropy to Extrapolating Deterioration in Repairable Sys., *Machine Learning*, 978-953-307-033-9, INTECH, 2010.

SELECTED CONFERENCE PRESENTATIONS

- [Chi-Chang Chang*](#), Y-C Chen, Advanced Machine Learning in Prediction of Second Primary Cancer in CRC, *30th Medical Informatics Europe Conference*, April 24-May 2, 2020, Geneva, Switzerland. (Online)
- [Chi-Chang Chang*](#), C. Cheewakriangkrai and Ying-Chen Chen Media Health Literacy Plays Critical Role of Shared Decision Making: Mediating or Moderating? *INFORMS*, Oct. 20-23, 2019, Seattle, USA.
- [Chi-Chang Chang*](#), Ensemble Feature Learning for Predicting Risk Factors of Secondary Cancer, *Fifth Int'l Conf. on Machine Learning, Optimization, and Data Science*, Sep. 10-13, 2019, Siena-Tuscany, Italy.
- [Chi-Chang Chang*](#), D Ma, Y-C Lu, C. Cheewakriangkrai, eHealth Literacy Plays Critical Role of Shared Decision Making, *19th World Congress of Psychiatry*, Aug. 21-24, 2019, Lisbon, Portugal.
- W-C Ting, [Chi-Chang Chang*](#), S-H Chen, C-J Lu, G-D Chen, C. Cheewakriangkrai, Developing an Integrated Clinical Decision-making Scheme (ICDS) for Predicting SPCs in Women with Endometrial Cancer: A Retrospective Analysis in TW and Thai, *IACR Conference*, June 6-9, 2019, Vancouver, Canada.
- [Chi-Chang Chang*](#), S-H Chen, C-J Lu, W-C Ting, G-D Chen, C. Cheewakriangkrai. Developing an Integrated Clinical-Decision-making Scheme (ICDS) for Predicting the Risk Factors of Second Primary Cancers, *40th Ann. Conf. of the Int'l Assoc. of Cancer Registries*, Nov. 13-15, 2018, Arequipa, Peru.
- [Chi-Chang Chang*](#), W-C Ting, C. Cheewakriangkrai, P-W Shueng. A Nationwide Retrospective Analysis of SPMs in Taiwanese Women: 1996-2010, *The XXII FIGO*, Oct. 14-19, 2018, Rio de Janeiro, Brazil.
- [Chi-Chang Chang*](#), C. Cheewakriangkrai, Y-C Lu, Modelling Hcw's Strategic Behaviour For Healthcare-Associated Infections, *3rd Int'l Health Sciences and Management Conf.*, Oct. 3-6, 2018, Sofia, Bulgaria.
- [Chi-Chang Chang*](#), Y-C Lu, Ch. Cheewakriangkrai. Combination of Assoc. Rules and Machine Learning Techniques for Predicting Recurrent Gynecologic Cancer, *17th IGCS*, Sep. 14-16, 2018, Kyoto, Japan.
- D. Tinnangwattana, C. Cheewakriangkrai, [Chi-Chang Chang](#). Etoposide Plus Platinum-based Adjuv. Chemother. on Small Cell Neuroendocrine Carcinoma of Cervix, *17th IGCS*, Sep. 14-16, 2018, Kyoto, Japan.
- Y.C. Lu, T.M. Lin, [Chi-Chang Chang*](#). Medical-seeking Behavior as Mediator in Relation to Posttraumatic Growth in Oral Cancer Survivors: A Longitudinal Study. *26th EPA*, Mar 3-6, 2018, Nice, French.
- [Chi-Chang Chang*](#), G-D Chen, W-C Ting, C. Cheewakriangkrai. Risk Factors of New Primary Cancers After Breast Cancer: 5-Year Retrospective Analysis in Taiwan, *20th ESGO*, Nov 4-7, 2017, Vienna, Austria.
- W-C Ting, [Chi-Chang Chang*](#), C. Cheewakriangkrai. Incidence Trends for MPMNs (2010-2014): Results from a Hospital-based Cancer Registry in Taiwan. *39th IACR*, Oct. 17-19, 2017, Utrecht, Netherland.
- S-L Cheng, H-H Liao, P-W Shueng, H-C Lee, C. Cheewakriangkrai, [Chi-Chang Chang*](#), Oral Cancer Patients' Preference in Medical Decision Making and QOL. *15th ICIMTH*, July 7-9, 2017, Athens, Greece.
- H-H Liao, S-L Cheng, P-W Shueng, H-C Lee, C. Cheewakriangkrai, [Chi-Chang Chang*](#), Decisional Conflict in Work-related Hand Trauma Patients. *15th ICIMTH*, July 7-9, 2017, Athens, Greece.
- [Chi-Chang Chang*](#), Decisional Trust and Regret Mediate the HRQL in Work-related Hand Injury Patients. *24th European congress of Psychiatry EPA 2016*, Mar 12-15, 2016, Madrid, Spain.
- Y-J Lin, C-H Lee, [Chi-Chang Chang*](#). Evaluation of a Video-based Intervention to Promote Condom Use among College Students in Taiwan. *14th ICIMTH*, July 1-3, 2016, Athens, Greece.
- F-C Liu, [Chi-Chang Chang*](#). Model-based Individualized Treatment of Chronic Granulomatous Disease. *14th ICIMTH*, July 1-3, 2016, Athens, Greece.
- [Chi-Chang Chang*](#), Shared Decision Making and Regret Plays Critical Roles of Posttraumatic Growth: a Longitudinal Study. *The 35th Society for Medical Decision Making*, Oct. 17-21, 2015, St. Louis, USA.
- P-S Su, T Teng, C-H Hsu, [Chi-Chang Chang*](#). Patients' Trust for Involvement in Shared Decision Making: A Longitudinal Study. *34th Society for Medical Decision Making*, Oct. 19-22, 2014, Miami, USA.
- [Chi-Chang Chang*](#) Factors affecting decisional conflict for patients with cervical cancer in Taiwan: an

observational study, *5th World Congress on Women's Mental Health*, March 4-7 2013, Lima, Peru.

- [Chi-Chang Chang](#)* The Effect on Life Quality of Oral Cancer Patients after the Orthopedic Surgery, *21st European Congress of Psychiatry*, 6-9 April, 2013, Nice, French.
- [Chi-Chang Chang](#)* Analysis of prognostic factors in patients relapsed ovarian cancer, *2013 INFORMS Annual meeting*, Oct. 6-9, 2013, Minneapolis, United States of America.
- [Chi-Chang Chang](#)* T Teng, Predicting the Recurrent Factors of Cervical Cancer using C5, MARS and RF: a comparison study, *18th ESGO*, Oct. 19-22, 2013, Liverpool, United Kingdom.
- [Chi-Chang Chang](#)* Determine Predictors of Life Quality Among Oral Cancer Patients with Orthopedic Trauma, *7th Annual Chicago Supportive Oncology Conference*, Oct. 28-29, 2011, Chicago, USA.
- [Chi-Chang Chang](#)* Developing the First Validation of Shared Decision-making Questionnaire in Taiwan, *32st Annual Meeting of the Society for Medical Decision Making*, Oct. 24-27, 2010, Toronto, Canada.
- [Chi-Chang Chang](#)* Bayesian Inference of a Nonhomogeneous Poisson Process with Exponential Model for Recurrent Events, *15th AMCIS*, Aug 6-9, 2009, San Francisco, United States of America.
- [Chi-Chang Chang](#)* Measuring Taiwanese Patients' Readiness for Involvement in Medical Decision-making, *31st Annual Meeting of the Society for Medical Decision Making*, Oct 18-21, 2009, LA, USA.

INVITED TALKS/ KEYNOTE SPEAKER

- Evidence-based Prevention Practice in SPCs and Recurrence: Retro- and Prospect in Asia Pacific, Fu Jen Catholic University, April 8, 2020.
- Alas Risk Assessment Tool in Patients with SPC-CRC, Healthcare EXPO TAIWAN (台灣醫療科技展), Dec 8, 2019.
- 後現代臨床醫學殖民表象與林布蘭的前景，第三屆後現代整合學及通識教育研討會-AI 與社會
- Developing Interdisciplinary Research and Collaboration in Med. Science, Jen-Ai Hospital, Sep 20, 2019.
- Toward Cancer Data Ecosystems: Cancer Registry as Service, TW Society of Cancer Registry, Aug 30, 2019.
- Connecting Medical Informatics and Clinical Practice on Medicine Research- A viewpoint of Cancer Research Data Ecosystem, Chiang Mai University Hospital, Chiang Mai, Thailand, Jan 10, 2019.
- Toward Cancer Data Ecosystems: Cancer Registry as a Service, Fu Jen Catholic University, Nov 30, 2019.
- Connecting Medical Informatics and Clinical Practice on Medicine Research, NCHU, May 24, 2019.
- The International Conference on Soft Computing in Data Analytics (CSDA 2018), Sri Sivani College of Engineering, Srikakulam, Andhra Pradesh, India, March 10-11, 2018.
- 3rd Intl Conf. on Health, Medicine and Life Sciences (MEDLIFE2016), Hangzhou, China, Dec 12-14, 2017.
- World Congress on Biomedical Engineering and Medical Informatics, Hangzhou, China, Nov 22-23, 2017.
- Using Cancer Registry Data to Enhance MPMNs Control Programs Development, 9th International Conference on Machine Learning and Computing (ICMLC 2017) Singapore, Feb 24-26, 2017.
- Repairable System Reliability Modeling and Decision Analyses, 2nd Annual 2016 International Conference on Management Science and Engineering (MSE2016), Chengdu, China, Dec 16-18, 2016.
- Application of Machine Learning to Predict the Colorectal Cancer Recurrence, 2016 2nd International Conference on Health, Medicine and Life Sciences (MEDLIFE2016), Shanghai, China, Dec. 13-14, 2016.
- Rethinking Behavior Change Strategies for Increasing Condom Use among College Students, Int. Conf. on Environmental Research and Public Health (ICERP2016), Shenzhen China, Oct. 21-23, 2016.
- Rethinking an In-service Training Program for Nurses' Strategic Hand Hygiene Behavior," 2016 International Conference on Psychology and Behavioral Sciences, Xi'an, China, July 28-29, 2016.
- Reliability Modeling and Decision Analysis in Repairable Systems," 2nd International Conference on Reliability Engineering (ICRE 2016) Chiang Mai, Chiang Mai University, Thailand, May 14-16, 2016.
- Application of Machine Learning to Predict the Female Cancers Recurrence, Tunghai Univ, Apr 29, 2016.
- Application of Machine Learning to Predict the Recurrent Cancers, 2016 International Conference on Biology and Pathology (ICBP2016) Guangzhou, Guangdong, China, June 25-26, 2016.
- Rethinking a In-service Training Program for Nurses' Strategic Hand Hygiene Behavior, 2016 International Conference on Modern Education and Social Science Wuhan China, April 16, 2016.

- Classification of Recurrent Ovarian Cancer Using Machine Learning Method, 8th International Conference on Machine Learning and Computing (ICMLC 2016) Hong Kong, Feb 22, 2016.
- Industry Engineering for Efficient, Effective, Equitable Decisions of Health Services Research in Taiwan, Industrial Engineering and Enterprise Information, Tunghai University, Taichung, Taiwan, Apr 12, 2015.
- Review of Health Services Research (HSR) in Taiwan, Department of Industrial Engineering and Management, Ming Chi University, Taipei, Taiwan, Jan 22, 2012.

GRANTS

● Ministry of Science and Technology 科技部計畫

MOST 109-2321-B-040-001-臨床資料庫與 AI 跨域開發加值應用- Cancer Registry AI-CDSS for Big Data Research (1/4)

MOST 109-2221-E-040-006- Developing Evidence-based Clinical Diagnosis, Prediction and Prognostic for CKD and Cancers

MOST 108-2321-B-040-001-MY2 [COPI] 腦科學專案計畫 Through Investigating Comorbid Epilepsy and Cerebrovascular Disease of Alzheimer's Disease by Animal Models and Clinical Subjects to Develop New Tools for Diagnosis and Treatment of Dementia

MOST 108-2221-E-035-034-MY2 [COPI] Photoacoustic Technology as a Non-Invasive Meth. to Detect the Degree of Carotid Vascular Sclerosis

MOST 108-2221-E-040-004- Exploring the Evidence-based Control Programs for Male with MPMNs in TW and US (II)

MOST 107-2221-E-040-009- Exploring the Evidence-based Control Programs for Male with MPMNs in TW and US (I)

MOST 106-2218-E-040 -001 -MY2 新南向計畫 Evidence-based CDSS for Gynecologic Cancer in Northern Thailand-- Contributions to International Efforts

MOST 106-2221-E-040-010- Obesity and age-period-cohort analyses on mortality rate of endometrial cancer in TW and United States

MOST 104-2633-E-040-001- 百人拓荒計畫 The Maze Runner of HIV/AIDS: it's about you!

MOST 102-2633-E-040-001- 百人拓荒計畫 A Novel Prognostic Index Model and Health Technology Assessment in Endometrial Cancer

MOST 101-2410- H-040-009- Longitudinal Dynamic Analyse of PTG and QoL Regarding Cervical Cancer Treatment - A SEM Study

MOST 99-2628-E-040-001- Bayesian Inference for Cervical Cancer in Survival Analysis

MOST 98-2410-H-040-006-MY2 A critical Stakeholder Analysis for Patient Shared Decision-making

● Short-term Visit Grant 國際科技人士短期訪問

MOST 109-2912-I-040-501 Reinhold Haux (Germany)

MOST 108-2912-I-005-501 (NCHU) Taka-Aki Sato (Japan)

MOST 107-2912-I040-501 Chou-Hong Chen (USA)

MOST 106-2912-I-040-502 Tetsuya Sakurai (Japan)

MOST 105-2816-B-040-001 Quan Zou (Tianjin University)

MOST 102-2912-I-040-503 Chung-Li Tseng (Australia)

● STD Ministry of Science and Technology 指導大專學生參與科技部計畫

MOST 109-2813-C-040-006-E Prediction of Risk Factors for Synchronous CRC in CRC Patients

MOST 106-2813-C-040-003-E Risk Predictive Factors in SPMs for Colorectal Cancer Survivors

MOST 104-2815-C-040-060-E Integrated Architecture for Endometrial Cancer Relapse Prediction

MOST 103-2815-C-040-028-E Developing an Advanced Machine Learning and Ensemble Learning

MOST 102-2815-C-040-005-H Machine Learning to Predict Recurrence-Proneess for Cervical Cancer

MOST 98-2815-C-040-006-E Patient's Preferences for Involvement in Shared Decision-making

● **CSMU Hospital Project 中山醫學大學附設醫院計畫**

CSH-2020-C020 Predicting the Risk Factors of Syn- and Meta- SPCs and Recurrent Colorectal Cancer

CSH-2018-D-002 Developing Control Programs for Women with MPMNs: Multi-International Cooperation

CSH-2018-A-015 Risk Factors of Multi-Primary Malignant Neoplasms (MPMNs) in Oral Cancer Survivors

CSH-2018-A-008 Applying Data Mining Techniques for Prediction on Recurrent Oral Cancer

CSH-2017-A-012 Risk of Second Primary Malignancies after Colorectal Cancer: Data Mining Technology

CSH-2017-A12-1 The treatment of Health Technology Assessment in Recurrent Colorectal Cancer

CSH-2017-A12-2 A Novel Prognostic Index Model of Recurrent CRC: (non)-Randomized Studies Construct

CSH-2015-A-006 Applying Data Mining Techniques for Prediction on Recurrent Colorectal Cancer

CSH-2015-A-014 A Video-based Intervention to Promote Condom Use among College Students in TW

CSH-2015-A-017 Trauma and Life Quality in Work-Related Hand Injury Patients: Cross-Sectional Study

CSH-2015-A-012 Exploring Plastic Surgery Patients' Preference in Medical Decision Making

CSH-2014-C-018 A Systemic View of the Comprehensively Ovarian Cancer Prognosis Program

CSH-2014-C18-1 Applying Data mining Techniques for Ovarian Cancer Prevention

● **University Cooperative Research Project 跨校研究計畫**

NCHU- CSMU 1090X 中興大學 Automatic histological grading for brain cancer via deep learning

NCHU- CSMU 1080X 中興大學 AI Approaches for Constructing Disease Risk Factor Analysis Model

FCU-CSMU 10701 逢甲大學 Glycemic Control on Multiple Myeloma Using Photoacoustic Spectrum

NCHU- CSMU 10705 中興大學 A Word/Phrase Matching-Based Text Mining Program for Automatic Extraction of Hormone Receptor Data from Free-text Pathology Reports on Breast Cancer

NCHU-CSMU-10612 中興大學 Machine Learning Applications in MPMNs prediction

● **Hospital Cooperative Research Project 跨院合作計畫**

CSMU-TSMH-108-2 屏東東港醫院 Machine Learning Techniques to Predict Risk Factor of Dialysis

CSMU-JAH-103-001 大里仁愛醫院 Bayesian Imperfect Information Analysis for Clinical Recurrent Data

CSMU-POHAI-107-1 羅東博愛醫院 Risk of SPMs after Local Advanced Rectal Cancer: DataMining Teches

CSMU-JAH-107-001 大里仁愛醫院 Comput. Intel. & Feature Select. for protein function and modification

CSMU-LSH-107-002 桃園聯新醫院 Prediction of postprandial blood glucose: machine learning techniques

CSMU-JAH-107-002 大里仁愛醫院 PTS disorder and PTG among cancer patients: cohort studies

CSMU-JAH-106-001 大里仁愛醫院 Data Mining applications in SPMs prediction

CSMU-JAH-105-001 大里仁愛醫院 MPMNS: a 5-Year Retrospective Analysis in a Metropolitan Hospital

CSMU-JAH-105-016 大里仁愛醫院 A prediction model of diabetic nephropathy and identify risk factors

CSMU-JAH-104-001 大里仁愛醫院 Exploring Patients' Preference in Medical Decision Making and QOL

CSMU-LSH-102-002 桃園聯新醫院 QOL after PTG for cervical cancer: a 18 months follow-up study

CSMU-JAH-101-001 大里仁愛醫院 Evaluation of the functional result and QOL after orthopedic surgery

CSMU-TSMH-099-1 屏東東港醫院 Dental Patients' Preference in Med. Decision Making between TW&UK HOSTING INTERNATIONAL ACADEMIC ACTIVITIES

● INTERNATIONAL CONFERENCES 創辦兩項國際會議

2017 International conference on Medical and Health Informatics (ICMHI)

2017.5.20-22, Chung Shan Medical University, Taichung, Taiwan

Theme: Medical Informatics Meets Quality Health Care - From Prediction to Prognosis

2018 International conference on Medical and Health Informatics (ICMHI)

2018 International conference on Healthcare Service Management (ICHSM)

2018.6.8-10, University of Tsukuba, Japan

Theme: Seamless Ubiquitous IT & Applications over the Evolution of Medical Informatics

2019 International conference on Medical and Health Informatics (ICMHI)

2019 International conference on Healthcare Service Management (ICHSM)

2019.5.17-19, Xiamen, China

Theme: Healthy data put to good use for better integrated care

2020 International conference on Medical and Health Informatics (ICMHI)

2020 International conference on Healthcare Service Management (ICHSM)

2020.8.14-16, Kamakura, Japan (Online)

Theme: Empowering Ecosystem Services throughout the World



Organized by



中山醫學大學
Chung Shan Medical University



中山醫學大學附設醫院
Chung Shan Medical University Hospital

Supported by



廈門大學
XIAMEN UNIVERSITY



國立中興大學
National Chung Hsing University



● **HEALTH BIG DATA, ANALYTICS & ARTIFICIAL INTELLIGENCE FORUM (HBAAD)**
健康大數據分析人工智慧論壇

[#HBAAI2017](#) with Japan 2017.12.28, Chung Shan Medical University, Taiwan

- Eigen-analysis Engine for Large-scale Simulation and Data Analysis
Prof. Sakurai, University of Tsukuba, Japan
- Integrating Big Data, Analytics & Artificial Intelligence in CSMU Hospital
Prof. Vice President Chih-Jen Tseng, CSMU Hospital, Taiwan
- Natural Computing & Bioinformatics Lab.
Prof. Yen-Wei Chu, NCHU, Taiwan
- Efficient biometric authenticated key agreements based on extended chaotic maps for telecare medicine information systems
Prof. Tian-Fu Lee, Tzu Chi University, Taiwan
- Unsupervised Feature Selection for Microarray Gene Expression Data Based on Discriminative Structure Learning
Prof. Xiucui Ye, University of Tsukuba, Japan
- Integration of data mining classification techniques and ensemble learning to identify risk factors and diagnosis ovarian cancer recurrence
Prof. Chi-Jie Lu, Fu Jen Catholic University, Taiwan

**Fostering Health Big Data, Analytics &
Artificial Intelligence (HBAAI) :**
Connectivity with Taiwan and Japan



指導與補助單位/ 科技部/ 中山醫學大學健康管理學院

主辦單位/ 中山醫學大學 中山醫學大學附設醫院

協辦單位/ 筑波大學 元智大學 中興大學 慈濟大學 健行科技大學



2017.12.28



[#HBAAI2018](#) with Thailand 2018.6.6, Chung Shan Medical University Taiwan

- Predicting Second Primary Cancer and Identifying Risk Factors for Breast Cancer Patients
Prof. Ssu-Han Chen, Ming Chi University of Technology, Taiwan
- BreastExtractor: A Word/Phrase Matching-Based Text Mining Program for Automatic Extraction of Hormone Receptor Data from Free-text Pathology Report in Breast Cancer
Prof. Yen-Wei Chu & Dr. Kai-Po Chang, National Chung Hsing University, Taiwan
- How to Integrate the ICT with Healthcare Administration in Research?
Prof. Hao-Yun Kao, Kaohsiung Medical University, Taiwan
- Integrative Medicine and Complementary Therapies in Lung Cancer
Dr. Tse-Hung Huang, Chang Gung Memorial Hospital, Taiwan
- Clinical Aspects of Recurrence Analysis in Endometrial Cancer
Dr. Chalong Cheewakriangkrai, Chiang Mai University, Thailand



#HBAAI2019 with Thailand 2019.1.5, Chiang Mai University, Thailand

- How to begin and apply medical informatics to clinical practice & research
Prof Chi-Chang Chang, CSMU, Taiwan
- Gynecologic cancer aspects and situation in Thailand
Prof. Jatupol Srisomboon, M.D., Division of Gynecologic Oncology, Chiang Mai University, Thailand; Chairman of Thai Gynecologic Cancer Society
- Current and future trends in gynecologic cancer research
Assoc. Prof. Prapaporn Suprasert, M.D., Division of Gynecologic Oncology; Head of Department of Obstetrics & Gynecology, Chiang Mai University, Thailand
- Faculty operation center and hospital informatics for administrative management
Asst. Prof. Krit Khwanngern, M.D., Associate dean for Information Technology Service Center (ITSC), Department of Surgery, Chiang Mai University, Thailand
- Research collaboration and endometrial cancer informatics
Asst. Prof. Chalong Cheewakriangkrai, M.D, Division of Gynecologic Oncology, Chiang Mai University, Thailand
- Machine Learning Applications for Recurrent Endometrial Cancer in Taiwan and Thailand: An Interdisciplinary Research (IDR)
Prof. Chi-Jie Lu, Chien Hsin University of Science and Technology, Taiwan
- Developing an Integrated Clinical Decision-making Scheme (ICDS) for Predicting SPCs in Women with Endometrial Cancer: A Retrospective Analysis in Taiwan and Thailand
Prof. Ssu-Han Chen, Ming Chi University of Technology, Taiwan

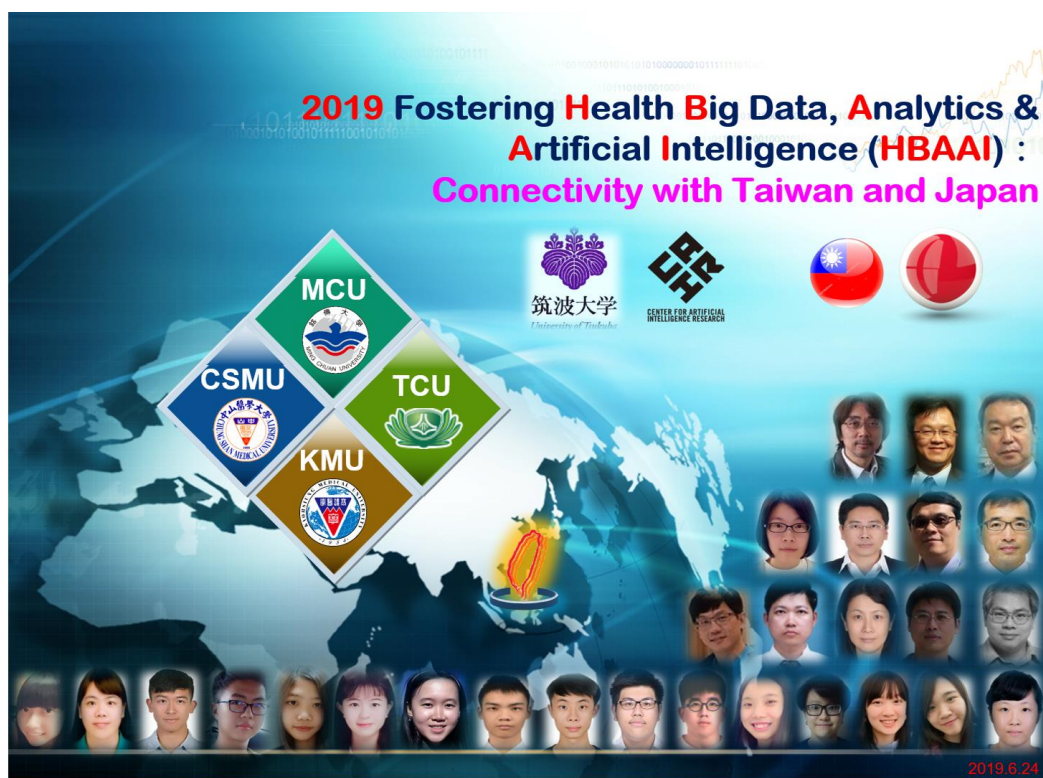


#HBAAI2019 with Japan (student) 2019.6.25, University of Tsukuba, Japan

- Medical robot development using deep learning.
Su-Jung Wu, Chung Shan medical university, Taiwan
- Design of Assistant Long-Term Care System
Li-Chieh Chen, Ming Chuan University, Taiwan
- Design of Assisted Visually Impaired System
Yuan-Rong Li, Ming Chuan University, Taiwan
- Enhanced Lightweight Dynamic Pseudonym Identity Based Authentication and Key Agreement Scheme Using Wireless Sensor Networks for Agriculture Monitoring
Meriske Chen, Tzu Chi University, Taiwan



June 24-27, 2019
University of Tsukuba,
Japan



#HBAAI2020 with Formosa 2020.7.30, Chung Shan Medical University, Taiwan

- Forecasting Influenza Outbreak using Decision Tree Scheme
Prof. Chi-Jie Lu, Fu Jen Catholic University
- Augmented Intelligence for Precision Cancer Treatment
Prof. Wei-Chih Shen, Chung Shan Medical University
- Class-specific Antibody Prediction for Linear B-cell Epitopes
Prof. Yen-Wei Chu, National Chung Hsing University
- Lightweight Authentication/Key Agreement for Medical IOT
Prof. Tian-Fu Lee, Tzu Chi University, Taiwan
- The Data Connection between Research and HIS
Director, Computer and Communications Center of Taichung Veterans General Hospital
- Development & Construction of Therapeutic Product Design
Prof. Chi-Hung Lo, Tunghai University
- Possible role of exosomes in ocular disease
Prof. Dr. Min-Yen Hsu, Chung Shan Medical University Hospital

2020第四屆健康大數據分析人工智慧論壇

Fourth Fostering Health Big Data, Analytics & Artificial Intelligence Forum

HBAAI with FORMOSA



日期：2020/7/30 15:30-17:40

地點：中山醫學大學 正心樓 0922會議室

主辦：中山醫學大學醫療決策科學實驗室



第四屆健康大數據分析人工智慧論壇



#HBAI2020 with TCM 2020.8.26, Chung Shan Medical University, Taiwan

- Traditional Chinese Medicine (TCM) on a Smartphone
Prof. Kun-Chan LAN, National Cheng Kung University
- Traditional Chinese Medicine (TCM) Meets Technology -A Pulse Diagnosis Pen Combining with TCM Diagnostic Analysis
Prof. Tsu-Wang SHENG, Feng Chia University
- A Fuzzy Syndrome Differentiation System for Traditional Chinese Medicine
Prof. Nai-Wei LIN, National Chung Cheng University
- An Astragalus-based Chinese herbal medicine inhibits cancer stem cell growth and improves the efficacy of cisplatin-based chemotherapy in non-small cell lung cancer
Prof. Tse-Hung HUANG, Chang Gung Memorial Hospital
- Survival Analysis of Combined Traditional Chinese and Western Medicine Therapy for Colorectal Cancer
Prof. Hung-Pin CHIU, Nanhua University



2020第五屆健康大數據分析人工智慧論壇

Fifth Fostering Health Big Data, Analytics & Artificial Intelligence Forum

HBAI with Digital TCM



日期：2020/8/26 15:00-18:40

地點：中山醫學大學 正心樓 0922會議室

主辦：中山醫學大學醫療決策科學實驗室



第五屆健康大數據分析人工智慧論壇



#HBAAI2020 with SPC 2020.9.4, Fu Jen Catholic University, Taiwan

- Evidence-based Prevention Practice in SPCs and Recurrence: Retro- and Prospect in Asia Pacific
Prof. Chi-Chang CHANG, Chung Shan Medical University
- Developing a Novel Machine Learning-Based Classification Scheme for Predicting SPCs in Colorectal Cancer Survivors
Prof. Chi-Jie LU, Fu Jen Catholic University
- Developing a Novel Machine Learning-based Classification Scheme for Predicting SPCs in Breast Cancer Survivors
Prof. Ssu-Han CHEN, Ming-Chi University of Technology
- Introduction and Application of Taiwan Cancer Registry Database
Prof. Chun-Ju CHIANG, Taiwan Cancer Registry, Health Promotion Administration, Health Promotion Administration Annual

2020第六屆健康大數據分析人工智慧論壇

Sixth Fostering Health Big Data, Analytics & Artificial Intelligence Forum

HBAAI with Second Primary Cancer

日期：2020/9/4 14:00-17:30

地點：輔仁大學羅耀拉大樓245(SL245)

主辦：輔仁大學商學研究所



中山醫學大學附設醫院
Chung Shan Medical University Hospital



長庚紀念醫院
Chang Gung Memorial Hospital

長庚大學
Chang Gung University



亞東紀念醫院
FAR EASTERN MEMORIAL HOSPITAL



衛生福利部國民健康署/輔仁大學公共衛生學院
臺灣癌症登記中心
Taiwan Cancer Registry Center



#HBAAI2020 with SPC 2020.10.23, Chia Nan University of Pharmacy and Science, Taiwan

- Accelerating Research on the Latest Medical Informatics across Asia-Pacific: Ubiquitous as Service
Prof. Chi-Chang CHANG, Chung Shan Medical University
- Exploring the factors that influence physician technostress from using mobile electronic medical records
Prof. Chung-Feng Liu, Chi-Mei Medical Center for Big Medical Data and AI Computing
- Explaining Resistance to System Usage in the PharmaCloud: A View of the Dual-factor Model
Prof. Weir-Sen Lin, Chia Nan University of Pharmacy and Science
- Understanding Determinants of Health Care Professionals' Perspectives on Mobile Health Continuance and Performance
Prof. Rai-Fu Chen, Chia Nan University of Pharmacy and Science
- Developing Multiple Evaluation Frameworks in an Older Adults Care Information System Project
Prof. Zhi-Yuan Su, Chia Nan University of Pharmacy and Science
- Evaluation of a mobile learning system to support correct medication use for health promotion
Prof. Ya-Ming Shiue, Chia Nan University of Pharmacy and Science

2020第七屆健康大數據分析人工智慧論壇

Seventh Fostering Health Big Data, Analytics & Artificial Intelligence Forum

HBAAI with Chia Nan University of Pharmacy and Science

Date: 2020/10/23 14:00-17:00

Site: Q323

Host: Chia Nan University of Pharmacy and Science



中山醫學大學 附設醫院
Chung Shan Medical University Hospital



奇美醫療財團法人 奇美醫院
Chi Mei Medical Center



#HBAAI2020 with SPC 2020.10.29, Tzu Chi University, Taiwan

- Accelerating Research on the Latest Medical Informatics across Asia-Pacific: Ubiquitous as Service
Prof. Chi-Chang CHANG, Chung Shan Medical University
- Potential of bacteriophages and their derived lytic modules as novel antimicrobial agents against multidrug-resistant bacteria
Prof. Kai-Chih Chang, Tzu Chi University
- PUF-base Lightweight Secure Protocol for IoMT
Prof. Tian-Fu Lee, Tzu Chi University
- Research on Computational Biology and Biological Data Mining
Prof. Liang-Tsung Huang, Tzu Chi University
- Life applications and health care systems Using Machine Learning Methods
Prof. Jyun-Guo Wang, Tzu Chi University
- Research on Clinical trial design and Statistics Medicine and Pharmacy
Prof. Tsung-Cheng Hsieh, Tzu Chi University
- Research on Bioinformatics and Biomedical Statistics
Prof. Kuang-Chi Chen, Tzu Chi University

2020第八屆健康大數據分析人工智慧論壇

Eighth Fostering Health Big Data, Analytics & Artificial Intelligence Forum

HBAAI with Tzu Chi University

Date: 2020/10/29 14:50-17:30

Site: H305

Host: Tzu Chi University



中山醫學大學 附設醫院
Chung Shan Medical University Hospital



佛教慈濟醫療財團法人
慈濟醫院



#HBAAI2020 with SPC 2020.11.11, National Quemoy University, Taiwan

- Accelerating Research on the Latest Medical Informatics across Asia-Pacific: Ubiquitous as Service
Prof. Chi-Chang CHANG, Chung Shan Medical University
- Artificial Intelligent Approach in Chinese herbal and Wine Quality Classifications
Prof. Hsuan-Ming Feng, National Quemoy University
- Deep Learning Approaches for the Analysis of Covid-19 Chest Radiography Images
Prof. Hsi-Chieh Lee, National Quemoy University
- Artificial intelligence Approaches for Food inspection
Prof. Shin-Mei Lee, National Quemoy University
- Evaluation of the effectiveness of the implementation of the Diabetes Shared Care Network in Kinmen
Prof. Ching-Sung Ho, National Quemoy University
- A Case Study in the Workplace by using A Cloud-Based Telehealth for Chronic Disease Management
Prof. Yung-Yu Su, National Quemoy University

2020第九屆健康大數據分析人工智慧論壇

Ninth Fostering Health Big Data, Analytics & Artificial Intelligence Forum

HBAAI with Quemoy University

Date: 2020/11/11 11:00-15:00

Site: 301 Meeting Room, College of Science & Engineering

Host: National Quemoy University



中山醫學大學 附設醫院
Chung Shan Medical University Hospital



國立金門大學
NATIONAL QUEMOY UNIVERSITY



#HBAAI2020 with SPC 2020.11.19, National Chung Cheng University, Taiwan

- Accelerating Research on the Latest Medical Informatics across Asia-Pacific: Ubiquitous as Service
Prof. Chi-Chang CHANG, Chung Shan Medical University
- Herbal Medicine Containing Aristolochic Acid and the Risk of Hepatocellular Carcinoma in Patients with Hepatitis B Virus Infection
Prof. Yao-Hsu YANG, Chang Gung Memorial Hospital, Chiayi
- A Medicinal Herb Combination System for Traditional Chinese Medicine Based on Multi-Objective Optimization
Prof. Nai-Wei LIN, National Chung Cheng University
- A Research and Development of Long-term Health care and check System for Traditional Chinese Medicine
Prof. Ming-Hsien YEH, National Chung Cheng University
- The Development of Early Screening Tool for Polypoidal Choroidal Vasculopathy
Prof. Wei-Yang LIN, National Chung Cheng University
- Change analysis of the peripheral blood circulation and endothelial function when applying laser acupuncture at Neiguan acupoint
Prof. Wei-Min LIU, National Chung Cheng University
- An Interactive AIoT-enabled Outcome Prediction System in Emergency Department
Prof. Chung-Feng LIU, Chi-Mei Medical Center for Big Medical Data and AI Computing

2020第十屆健康大數據分析人工智慧論壇

Tenth Fostering Health Big Data, Analytics & Artificial Intelligence Forum

HBAAI with National Chung Cheng University

Date: 2020/11/19 14:00-18:30

Site: 105 Meeting Room

Host: National Chung Cheng University



中山醫學大學 附設醫院
Chung Shan Medical University Hospital



奇美醫療財團法人 奇美醫院
Chi Mei Medical Center



嘉義長庚紀念醫院
Chang Gung Memorial Hospital, Chiayi



#HBAAI2020 with SPC 2020.12.10, Feng Chia University, Taiwan

- Accelerating Research on the Latest Medical Informatics across Asia-Pacific: Ubiquitous as Service/ *Prof. Chi-Chang CHANG*, *Chung Shan Medical University*
- Detection Performance Regarding Sleep Apnea-Hypopnea Episodes with Fuzzy Logic Fusion on Single-Channel Airflow Indexes/ *Prof. Tsu-Wang SHEN*, *Chang Gung Hospital, Chiayi*
- Application of machine learning to predict the possibility of re emergency treatment 3 days after discharge/ *Prof. Feng-Cheng LIN*, *Feng Chia University*
- Lie Catching from Facial Micro-expressions: Challenges and Opportunities
Prof. Sze-Teng LIONG, *Feng Chia University*
- The Development of Early Screening Tool for Polypoidal Choroidal Vasculopathy
Prof. Wei-Yang LIN, *National Chung Cheng University*
- Development a multi-functionalized nanocomposite for bio-sensing, diagnostic and therapeutic/ *Prof. Yi-Hsin CHIEN*, *Feng Chia University*
- Experience sharing of sports technology and IoT/ *Prof. Min-Huan WU*, *Tunghai University*
- Data analytics and HRP Integration
Prof. William Yu-Chung WANG, *Waikato University, New Zealand*

2020第十一屆健康大數據分析人工智慧論壇

Eleventh Fostering Health Big Data, Analytics & Artificial Intelligence Forum

HBAAI with FCU

Date: 2020/12/10 14:00-17:00

Site: Feng Chia University

Host: 418 Meeting Room



中山醫學大學 附設醫院
Chung Shan Medical University Hospital



逢甲大學
Feng Chia University



THE UNIVERSITY OF
WAIKATO
Te Whare Wānanga o Waikato



#HBAAI2020 with SPC 2020.12.18, Kaohsiung Medical University, Taiwan

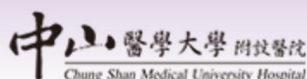
- Accelerating Research on the Latest Medical Informatics across Asia-Pacific: Ubiquitous as Service
Prof. Chi-Chang CHANG, Chung Shan Medical University
- Accelerating Human-Machine Learning with Doctors-in-the-loop
Prof. Yi-Huang KANG, National Sun Yat-sen University
- Introduction to CGRD- the largest EMR database in Taiwan
Prof. Yu-tung HUANG, Chang Gung Memorial Hospital
- Applications of Natural Language Processing in Clinical Research: A Case Study of Cancer Registry Information Extraction
Prof. Hong-Jie DAI, National Kaohsiung University of Science and Technology

2020第十二屆健康大數據分析人工智慧論壇

Twelfth Fostering Health Big Data, Analytics & Artificial Intelligence Forum

HBAAI with KMU

日期：2020/12/18 13:00-17:30
地點：勵學大樓3樓半視聽中心
主辦：高雄醫學大學大數據研究中心



#HBAAI2020 with SPC 2020.12.19, Jen-Ai Hospital, Taiwan

- Accelerating Research on the Latest Medical Informatics across Asia-Pacific: Ubiquitous as Service
Prof. Chi-Chang CHANG, Chung Shan Medical University
- The development of TW biotechnology and the application of precision medicine
CEO Chang-Wei Li, Allbio Co
- The association of the socioeconomic disparity with global nasopharyngeal carcinoma incidence and mortality
Dr. Chin-Fang Chang, Jen-Ai Hospital
- Exploring the evolution of the Covid-19 epidemic from visual correlation analysis
Prof. Chao-Chang Chiu, Yuan Ze University
- DIY Information Extraction Model for Medical Data and its Application
CEO Ru-Yng Chang, AI Clerk International Co
- Sicca Sinusitis - from Big-Data Research to Breakthrough-Therapy Development
Dr. Geng-He Chang, Chang Gung Memorial Hospital, Chiayi

2020第十三屆健康大數據分析人工智慧論壇
Thirteen Fostering Health Big Data, Analytics & Artificial Intelligence Forum
HBAAI with Jen-Ai Hospital
Date: 2020/12/19 14:00-17:00
Site: Meet Room 10 F
Host: Jen-Ai Hospital



● STUDY VISIT 國外移地研究

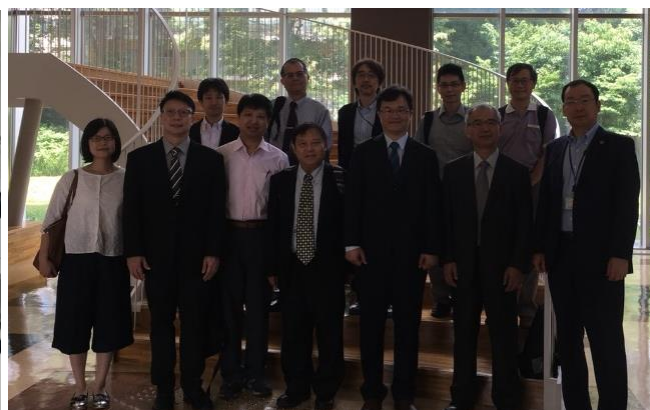


1st Study Visit CMU, Dec 8-11th, 2017

2nd Study Visit CMU Jan 4-7th, 2019



Chiang Mai University visited Chung Shan Medical University Sep 27 2019



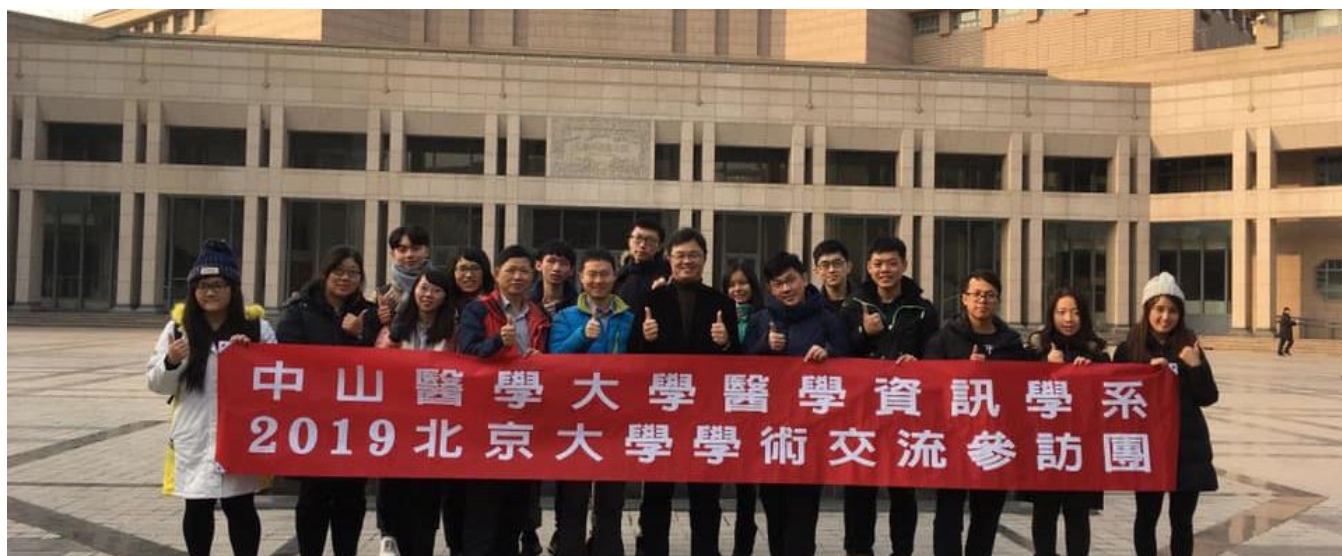
Study Visit at Research and Development Center for Precision Medicine (PMC) in University of Tsukuba, Japan. June 7 2018



Study Visit at Center for Innovative Medicine and Engineering (CIME) in University of Tsukuba, Japan. June 7 2018



Study Visit at Center for Innovative Medicine and Engineering (CIME) in University of Tsukuba, Japan (Taiwan Medical Informatic Team) June 27 2019



1st Study Visit in Peking University, China. Jan 11-13th, 2019



2nd Study Visit in Peking University, China. Jan 11-15th, 2020

● MEMORANDUM OF UNDERSTANDING 合作備忘錄簽訂



Between School of Medical Informatics, CSMU and Center For Artificial Intelligence Research (C-AIR), University of Tsukuba (2019.7.1)



Between Medicine School, CSMU and Medicine School, Chiang Mai University (2019.6.1)

● JOINT EXECUTIVE BOARD ON MEDICAL INFORMATICS IN TAIWAN (JEBMI)

台灣醫學資訊系所主管聯席會議

台灣醫學資訊學系所主管聯席會議
The Joint Executive Board on Medical Informatics in Taiwan (JEBMI)

本會創立於2018年

本主管聯席會議的宗旨

#提昇國內醫療資訊教育品質

#掌握醫療資訊技術專業發展及產業需求趨勢

秉持前瞻與精進的目標

持續年度聯席會議 使命

#整合台灣醫療資訊實務

#培育具國際宏觀視野

#課程設計與師資交流

#創新靈活及應變能力

#跨領域醫療資訊與管理人才

共同攜手團結精進：教學研究、行政服務與國際交流



First JEBMI in CSMU 2018.10.11

Second JEBMI in KMU 2019.8.29



Third JEBMI in CSMU 2020.7.2